

DELRAY LAKES

A PLAT OF A PORTION OF SECTION 8, TOWNSHIP 46 SOUTH, RANGE 43 EAST AND ALSO A REPLAT OF A PORTION OF THE AMENDED PLAT OF ISLES OF DELRAY SECTION 2 AS RECORDED IN PLAT BOOK 71, PAGES 58 THRU 62 OF THE PUBLIC RECORDS OF PALM BEACH COUNTY, FLORIDA

CITY OF DELRAY BEACH PALM BEACH COUNTY, FLORIDA

JANUARY 3RD, 1996

SHEET 5 OF 5

Ralph D. Demaggio & Associates, Inc.

Consulting Engineers, Planners, Surveyors
6100 Boulevard of Champions
North Lauderdale, Florida 33068
(305) 969-5100
FAX (305) 969-9680

- LEGEND**
- R = RADIUS
 - Δ = CENTRAL ANGLE
 - L = ARC LENGTH
 - W = RIGHT OF WAY
 - ⊙ = SET CONCRETE MONUMENT
 - ⊙ = PERMANENT REFERENCE MONUMENT
 - ⊙ = PERMANENT CONTROL POINT
 - ⊙ = FOUND CONCRETE MONUMENT
 - ⊙ = FOUND IRON ROD
 - FIR = POINT OF BEGINNING
 - PFB = POINT OF COMMENCEMENT
 - (P) = PLAT
 - (S) = SURVEY
 - (D) = DEED
 - (C) = CALCULATED
 - PLS = PROFESSIONAL LAND SURVEYOR
 - PRM = PERMANENT REFERENCE MONUMENT
 - FB = PLAT BOOK
 - PG = PAGE
 - OR = OFFICIAL RECORDS
 - SCM = SET CONCRETE MONUMENT
 - CL = CENTERLINE
 - EDP = EDGE OF PAVEMENT
 - SIR = SET IRON ROD #3444
 - L.A.E. = LIMITED ACCESS EASEMENT
 - ONR = BENNETTS NON RADIAL LOT LINES

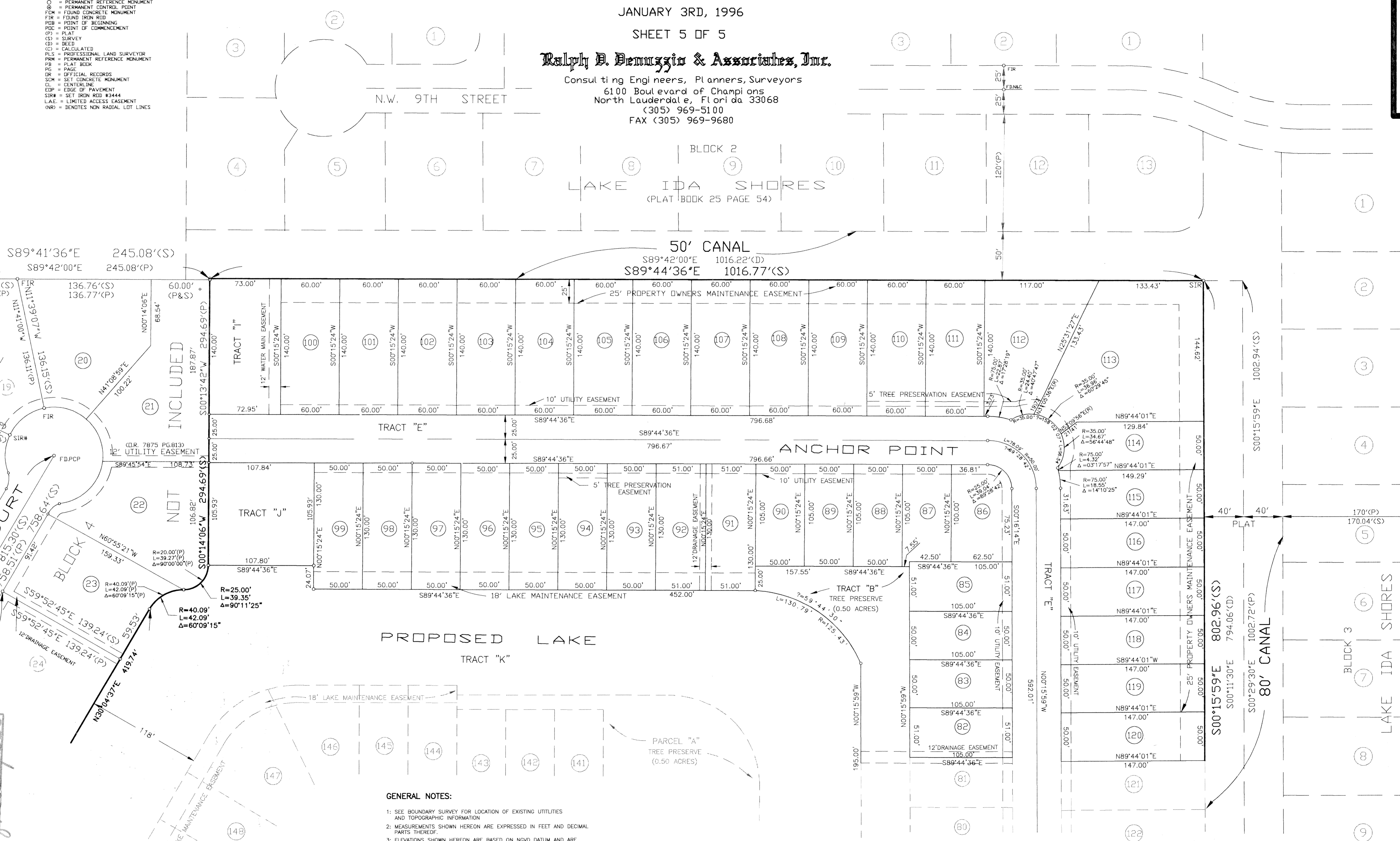
SCALE 1" = 50'



SUBDIVISION - Delray Lakes
 BOOK - 78 PAGE - 188
 FLOOD ZONE -
 QUAID -
 SE -
 FUD NAME - City of Delray Beach

SEE SHEET NO. 3 OF 5

TAZ-557
 ENFIELD COURT
 BEARING BASE PLAT OF ISLES OF DELRAY SECTION 2 PER RECORD PLAT OF ENFIELD COURT PER RECORD PLAT OF ISLES OF DELRAY SECTION 2 (PLAT BOOK 71 PAGE 62)



- GENERAL NOTES:**
- 1: SEE BOUNDARY SURVEY FOR LOCATION OF EXISTING UTILITIES AND TOPOGRAPHIC INFORMATION
 - 2: MEASUREMENTS SHOWN HEREON ARE EXPRESSED IN FEET AND DECIMAL PARTS THEREOF.
 - 3: ELEVATIONS SHOWN HEREON ARE BASED ON NGVD DATUM AND ARE RELATIVE TO THE FOLLOWING BENCHMARK: PALM BEACH COUNTY BM DEPT ELEVATION = 13.551
 - 4: MINIMUM FINISH FLOOR ELEVATION = 16.40
 - 5: SEE BOUNDARY SURVEY FOR LOCATION OF EXISTING EASEMENTS
 - 6: SOURCES OF INFORMATION USED IN THE PREPARATION OF THIS SURVEY AND PRELIMINARY PLAT ARE AS FOLLOWS:
 - A) TITLE COMMITMENT NO. FA--CC--198178, DATED 6/21/95
 - B) RECORD PLAT OF ISLES OF DELRAY SECTION 2 PER PLAT BOOK 40 PAGE 132 THRU 133
 - C) AMENDED PLAT OF ISLES OF DELRAY SECTION 2 PER PLAT BOOK 71 PAGE 58 THRU 62
 - D) RECORD PLAT OF LAKE IDA SHORES PER PLAT BOOK 25, PAGE 54
 - E) RECORD PLAT OF LAKE IDA MANOR ADDITION 2 PER PLAT BOOK 25, PAGE 61
 - 7: BEARINGS SHOWN HEREON ARE BASED ON THE RECORD PLAT OF ISLES OF DELRAY AMENDED IN RECORD PLAT BOOK 71, PAGES 58 THRU 62

TOTAL AREA = 40,820 ACRES

SEE SHEET NO. 4 OF 5